

# GLOBAL

March 2025

[www.GlobalJewelrySpecial.com](http://www.GlobalJewelrySpecial.com)

## *Jewelry Equipment, Tools & Accessories*



創新無止境

**Innovation without boundaries**



**AI Jewelry x3 Series**

多噴嘴3D打印紅蠟機 (三組賽爾噴頭)  
High-resilience multi-nozzle 3D wax printing machine  
(3 XAAR nozzles)

**潤記號機械設備有限公司**  
**YUEN KEE HO MACHINERY LTD**

Rm. M-5, 8/F, Kaiser Estate Phase 3, 11 Hok Yuen Street, Hung Hom, Kowloon, HongKong  
Tel: (852) 2330 0090 Fax: (852) 2627 0199 Email: [anita@yuenkeeho.com](mailto:anita@yuenkeeho.com), [samdeng@orfintech-intl.com](mailto:samdeng@orfintech-intl.com)





天豐珠寶有限公司  
TIN FUNG JEWELLERY LIMITED

款式齊全

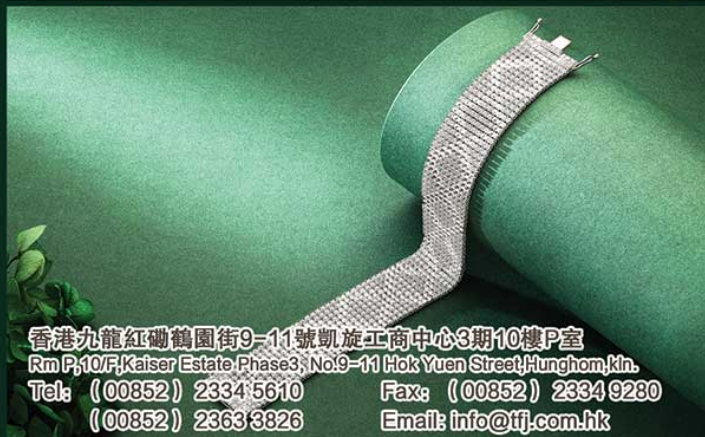
零售批發



空心鏈  
Hollow Chain



空心鏈  
Hollow Chain



香港九龍紅磡鶴園街9-11號凱旋工商中心3期10樓P室  
Rm P, 10/F, Kaiser Estate, Phase 3, No. 9-11 Hok Yuen Street, Hung Hom, Kln.  
Tel: (00852) 2334 5610 Fax: (00852) 2334 9280  
(00852) 2363 3826 Email: info@tfj.com.hk







天豐珠寶有限公司

TIN FUNG JEWELLERY LIMITED



香港九龍紅磡鶴園街9-11號凱旋工商中心3期10樓P室  
Rm P,10/F,Kaiser Estate Phase3, No.9-11 Hok Yuen Street,Hunghom,Kln.  
Tel: (00852) 2334 5610 Fax: (00852) 2334 9280  
(00852) 2363 3826 Email: info@tjf.com.hk

★ 已申請專利  
Patent Acquired





# 天豐珠寶有限公司

TIN FUNG JEWELLERY LIMITED

# 公司其他業務範圍

TinFung's other business scope

## 全港最高價回收舊金飾，全港唯一，一條龍服務

Unique one-station service, high-priced recycling for k gold jewellery

## 金銀業貿易場行號 70

CHINESE GOLD & SILVER EXCHANGE MEMBER NO.70



回收金飾

Collecting your k-gold jewellery



王水拆石 (對寶石不會損耗)

Stones Removal (No damage on your stones or gems)



拆石後洗淨交回客戶

Return you the stones in clean & good condition



提純後可取回金或取回現金

You can take cash or gold after refinery

天豐金業集團有限公司為金銀業貿易場之行員 (070)，提供不同款式的黃金現貨如「兩裝」及各類公斤條 (100、300、500 及 1000 克) 等以供客戶選擇。除現貨買賣，天豐亦為 K 金首飾、金、銀、鈀金、鉑金及廢料等提供提純及回收服務，我們與客人交收貨物後一般 2 至 3 個工作天便能完成整個提純程序。

詳情瀏覽網站 [tfj.com.hk](http://tfj.com.hk)

Details on [www.tfj.com.hk](http://www.tfj.com.hk)

我可為尊貴客戶訂造貴商號商標的各類型金條及金粒  
Bespoke Logo or Trademark

Tin Fung Gold Group Limited is Member No.70 of Chinese Gold & Silver Exchange, we providing a variety of Finest Gold products such as tael, 100/300/500 & 1000gram package. Moreover, Tin Fung provides refinery service for k-gold jewelry, gold, silver, palladium, platinum & wastage. We have efficient



procedures which only take 2-3 working days after handover to us.

圖片僅供參考  
Images are for reference only

## 為廣大客戶提供最快 最優惠 最準確 國際認可的成色檢測中心

Providing reliable, efficient purity assay service up to international standards at reasonable price

1. 國際認可火試金法 - 灰吹法 (ISO 11426:2014 已獲美國 IAS 認可)

2. 採用最先進及最準確的 ICP-OES 減差法

Accredited cupellation method (ISO 11426:2014 Accredited by IAS)

ICP-OES method - Advanced & Highly accurate



氧化灰吹

Cupellation Process



光譜儀檢測

XRF Machine



ICP-OES機

ICP-OES Machine



AA機

AA Machine

政府認可 ISO/IEC 17025:2017 實驗室

樣本測試 HKD\$300/pc

3 個工作天內出 ISO 認可分析報告

Government accredited ISO/IEC 17025:2017 Laboratory

HKD\$300/sample

Release ISO accredited analysis report in 3 business days

零售 / 批發:

- 各款 K 金鏈、牛仔鏈及鑲口鏈
- 各款 K 金首飾配件
- 各款空心管、記憶金屬
- CNC 車花 (珠 / 片 / 管)
- 不同成色焊片、鐳射線
- 各款彈金片及彈金線
- 黃金、貴金屬買賣

Retail / Wholesale:

- K gold chain, Cuban chain & Tennis bracelet
- K gold jewellery findings
- Hollow tubes / Elastic metals
- CNC made items (Beads/ Plates/ Tubes)
- K gold welding sheets / laser wires
- K gold plates & wires
- Gold & Precious metals trading



公司地址: 香港九龍紅磡鶴園街9-11號凱旋工商中心3期10樓P室

Rm P,10/F,Kaiser Estate Phase3, No.9-11 Hok Yuen Street, Hung Hom, Kln.

Tel: (00852) 2334 5610

Fax: (00852) 2334 9280

(00852) 2363 3826

Email: [tfhk@tfj.com.hk](mailto:tfhk@tfj.com.hk)

web: [tfj.com.hk](http://tfj.com.hk)



國際認可機構  
International accredited standard



天豐微信公眾號





中国珠宝玉石首饰行业协会

GEMS & JEWELRY TRADE ASSOCIATION OF CHINA

## The List of Chinese Primary Jewelry Fairs

2024 China International Jewellery Fair(Beijing)

2024. 10. 24—28

China International Exhibition Center

2024 Gems and Jewelry Development Conference  
Hainan International Jewellery Fair

2024. 12. 19—22

Hainan International Convention  
and Exhibition Center

2025 Beijing International Jewelry Fair

2025. 3. 19—23

China National Convention Center

Jewelry Shanghai 2025

2025. 6. 19—22

Shanghai World Expo Exhibition  
Convention Center

2025 China Kunming International Stone EXPO

2025. 7. 10—14

Kunming Dianchi International Convention  
and Exhibition Center



**Contact:**

010-5957 5088

010-5957 5077



<http://www.jewellery.org.cn>

GAC WeChat



GAC Exhibit WeChat





# YUEN KEE HO 潤記號®

Having been established for 53 years, Yuen Kee Ho takes pride in its manufacture of different kinds of high-quality jewelry accessories and equipments. A leading supplier of jewelry appliances based in Hong Kong, Yuen Kee Ho is an agent of various international brands, such as Yasui, EnvisionTEC, OROTIG, among others. The company believes in the importance of high quality, competitive prices and prompt delivery. It respects customers who demand outstanding high-quality suppliers, keeping an eye on quality which is highly valued by the company, as reflected in every aspect of its products, such as designs, price and service.

Yuen Kee Ho offers a wide spectrum of equipments, including rapid prototyping machine, pressure casting machine, welding machine, magnetic tumbler, etc. Using the state-of-the-art equipments, the company adopts technologies of its own to create the supreme products for its clients. Yuen Kee Ho also specialises in producing customised products that are in accordance with clients' specific demands, ensuring them to be able to find exactly what they are looking for.

## YASUI Vacuum Pressure Casting Machine K2NEXT 16000

### K2NEXT 16000

Model	VPC K2NEXT 16000	
Description	Vacuum Pressure Casting Machine K2NEXT 16000	
Casting system	Vacuum pressure casting system Max.pressure 0.3 MPa, with internal gas tank	
Replacing gas	Single gas (Argon)	
Program memory	100 memories	
Control	Specially designed micro-processor control. Temperature control by PID with accuracy of +/- 2 degrees centigrade.	
Heating	Induction heating (with specially designed metalstirring function)	
Oscillation	10 kW	
Cooling water	Tap water direct cooling system more than 3 L / min, more than 1.5 kgf / cm <sup>2</sup> , Less than 30 °C	
Flask	Flask is elevated by the air cylinder to secure tight gas sealing and, as a result, perfect atmosphere separation of in-out-flask.	
Max.flask size	Standard: 125 mm dia. x 230 mm (H)	
	Option: 125 mm dia. x 300 mm (H)	
Crucible volume	Volume	242 cc
	Weight	150 cc
Max.castingamount	Weight	24K: 3.0 Kg
		18K: 2.3 Kg
		14K: 2.1 Kg
		925Ag: 1.5 Kg
Shot maker	Option (Shot Maker SM1)	
Data output	Option: USB Memory (2 - 16 GB)	
Max.temp.	K-type	1,200 °C
	R-type	1,450 °C
Ultimate vacuum	0.1 to 10 hPa (depends on the vacuum pump)	
Vacuum filter	Hight mesh, replaceable from the front panel	
Power source	380 V +/- 10 %, 50 / 60Hz 3 phase, 11 kVA	
Net weight	Approx. 250 Kg	



### RBF21, RBF37 Made by Yasui Quality Seal

The steel pot can be ideally and evenly heated in every part of the turntable. The rotation of the turntable will stir the atmosphere in the furnace, and the radiation of the heater will be randomly reflected. Through this technology, all the steel pots are heated at the same temperature, regardless of the power outage recovery function of the equipment at any position in the furnace. Wax-mounted overheating protection system 8-segment heating program, 20 program storage

Temperature tracking and monitoring to ensure optimal setting of sintering temperature Equipped with a secondary burner, the environment is odorless and ensures the safety and health of employees





# YUEN KEE HO MACHINERY LTD

Rm. M-5, 8/F, Kaiser Estate Phase 3, 11 Hok Yuen Street, Hunghom, Kowloon, HongKong

Tel: (852) 2330 0090 Fax: (852) 2627 0199 Email: [anita@yuenkeeho.com](mailto:anita@yuenkeeho.com) , [samdeng@orfintech-intl.com](mailto:samdeng@orfintech-intl.com)

Striving to satisfy every customer's request and thus to earn their trust, Yuen Kee Ho offers diversified and one-stop service. In addition to customisation of equipments tailored to meet individual requirements, the company is also pleased to provide its clients professional knowledge about the appliances as well as their usages. The follow-up services of Yuen Kee Ho are dedicated to fulfil clients' specific needs and expectations. It is the commitment of Yuen Kee Ho to please every customer with the best service guaranteed.

Diversifying its product range, Yuen Kee Ho has extended its mastery in producing jewelry accessories, in particular gold solders for goldsmiths and jewellers, plating solutions and materials, as well as gold accessories. In the future, Yuen Kee Ho will remain committed to expanding the diversity of its products so as to meet up with various market demands.



## RRNext

Machine Properties	
Laser Type	Diode-Pumped Fiber (YB) Laser
Laser Source (Nominal Power)	30 W, 30 W MPOA, 50 W, 60 W MOPA, 70 W HD, 100 W HD
Marking Area	60 x 60 mm (with 100 mm focal lens) 110 x 110 mm (with 160 mm focal lens) 145 x 145 mm (with 210 mm focal lens)
Z Axis	Motorized with manual and software control, Z-axis stroke of 200 mm
Frequency	1.0 kHz - 4000 kHz
Safety Class	Class 1 (hatch closed), Class 3R (hatch open)
Software	MARKo / samlight or EZ Cad
Cooling System	Forced air
Wave Length	1064 nm
Power	230 Vac $\pm$ 10%, 50/60 Hz, 1P + N + PE, 1.0 kW Max
Weight	71 kg



## EvoX Tech

Machine Properties	
Crystal Type	Nd:YGA @ 1064
Pulse Power	250 J
Pulse Duration	25 ms
Peak Pulse Power	10 kW
Average Power	90 W
Pulse Frequency	0 - 40 Hz



## EVO X

Machine Properties	
Crystal Type Nd:YGA @ 1064	$\phi$ 7 mm
Pulse Power	225 J
Pulse Duration	25 ms
Peak Pulse Power	9.0 kW
Average Power	90 W
Pulse Frequency	0 - 40Hz
Electrical	115 - 230 VAC $\pm$ 10%, 1+N ph, 50/60 Hz, 16A
Focal Diameter	0.1 to 2 mm
Command Access	External with 7" capacitive touch screen display, internal with rotary switch
Cooling System	Liquid cooled (4 l) with forced ventilation
Weight	41 Kg





潤記號機械設備有限公司  
YUEN KEE HO MACHINERY LIMITED



## Ai Jewelry x3explorer 人工智能珠宝设计软件 Innovation and Sustainability

### 内卷 No Way

文字描述 快速生成高清设计图片  
珠宝企业高管和设计师的理想选择  
轻松拥有源源不断的创新珠宝款式  
是珠宝企业获取更多订单的策略

购买J608HD x3plus  
赠送高级套餐(1年)的使用权限,名额有限

文字描述通过Ai Jewelry x3explorer极速生成源源不断的珠宝款式



Ai生成案例1



Ai生成案例3



Ai生成案例2

生成的图片分辨率达:2024x2048 pixel



UNIWAY  
3D TECHNOLOGIES

BEFORE & AFTER

Yasui®



Cooksongold  
Heimerle + Meule Group

OROTIG



GemLightboxPro

GemSparkle



Print Your Potential

Heraeus

starrag

總公司地址:

香港九龍紅磡鶴園街11號凱旋工商中心三期8字樓M-5室

Tel: (852)23300090 Fax: (852)26270199

E-mail: anita@yuenkeeho.com

CEO: Sam Deng Cellphone: 13809200618 (微信同號)

分公司地址:

廣州市番禺區沙頭街銀平路3街8號A2

佛山市順德區倫教鎮振華中路1號順匯園2棟8樓

深圳市福田區沙頭街道天安社區泰然五路4號天展大廈4層D座





潤記號機械設備有限公司  
YUEN KEE HO MACHINERY LIMITED



## Ai Jewelry x3+ 人工智能珠宝设计软件 Innovation and Sustainability

图片可直接导入生成 STL  
提升3D画图效率,设计师的理想选择  
轻松拥有源源不断的珠宝款式3D文档  
解决入行人员少,技术断层的深运影响  
节省制造成本,提升竞争力

购买J608HD x3plus

赠送高级套餐(1年)的使用权限,名额有限

图片导入Ai Jewelry x3+ 生成源源不断的珠宝款式3D文档



图片或手画设计图

生成STL

=

Ai Jewelry x3+



Ai 生成3D文档正面

+



Ai 生成3D文档背面



UNIWAY  
3D TECHNOLOGIES

BEFORE & AFTER

Yasui®

Cooksongold  
Heimerle + Meule Group

OROTIG

OTEC  
PRECISION FINISHING SOLUTIONS



GemLightboxPro

GemSparkle



envisionTEC

Heraeus

starrag

總公司地址:

香港九龍紅磡鶴園街11號凱旋工商中心三期8字樓M-5室

Tel: (852)23300090 Fax: (852)26270199

E-mail: anita@yuenkeeho.com

CEO: Sam Deng Cellphone: 13809200618 (微信同號)

分公司地址:

廣州市番禺區沙頭街銀平路3街8號A2

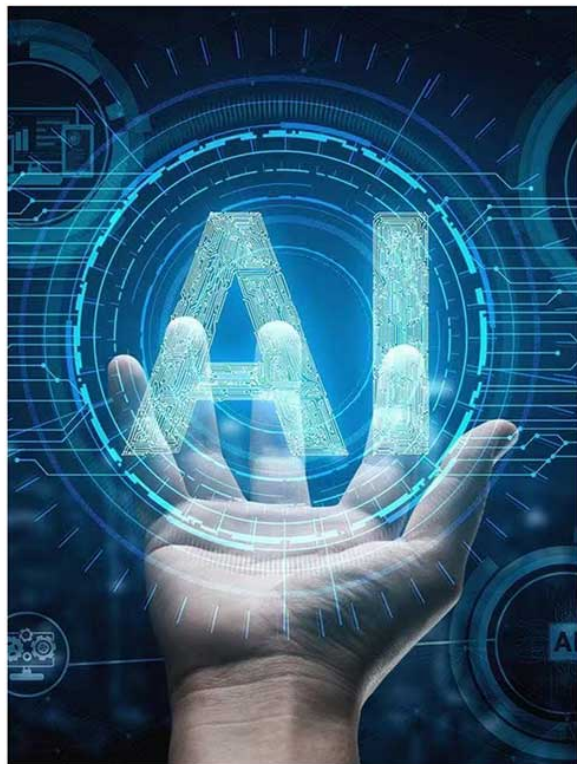
佛山市順德區倫教鎮振華中路1號順匯園2棟8樓

深圳市福田區沙頭街道天安社區泰然五路4號天展大廈4層D座





潤記號機械設備有限公司  
YUEN KEE HO MACHINERY LIMITED



## Ai Jewelry x3

3D 渲染引擎

JCD文件可直接导入渲染

Marketing Strategy

节省制造成本,提升竞争力



案例4



案例5

**Ai Jewelry x3 渲染生成源源不断的珠宝款式,产品快速面向市场**



3D渲染引擎案例1



3D渲染引擎案例2



3D渲染引擎案例3



UNIWAY  
3D TECHNOLOGIES

BEFORE & AFTER

Yasui®

Cooksongold  
Heimerle + Meule Group

OROTIG

OTEC  
PRECISION FINISHING SOLUTIONS

GemLightboxPro

GemSparkle

envisionTEC  
Print Your Potential

Heraeus

starrag

總公司地址:

香港九龍紅磡鶴園街11號凱旋工商中心三期8字樓M-5室

Tel: (852)23300090 Fax: (852)26270199

E-mail: anita@yuenkeeho.com

CEO: Sam Deng Cellphone: 13809200618 (微信同号)

分公司地址:

廣州市番禺區沙頭街銀平路3街8號A2

佛山市順德區倫教鎮振華中路1號順匯園2棟8樓

深圳市福田區沙頭街道天安社區泰然五路4號天展大廈4層D座





潤記號機械設備有限公司  
YUEN KEE HO MACHINERY LIMITED

## Printing on demand

型号: J608HD x3plus

打印尺寸: 398x210x140mm

XHD: 2950x2950x1850 dpi

多喷嘴3D打印喷蜡机

进入新时代-无模化珠宝生产模式

100%蜡, 高韧性, 蜡镶、花丝、古法金  
告别水溶蜡工艺, 铂金直接铸造

*Ai Jewelry x3系列+J608HD x3plus = Innovation+Sustainability*



Innovation

3组喷头

三通道同时打印

高精度, 高速度

光滑的蜡模表面

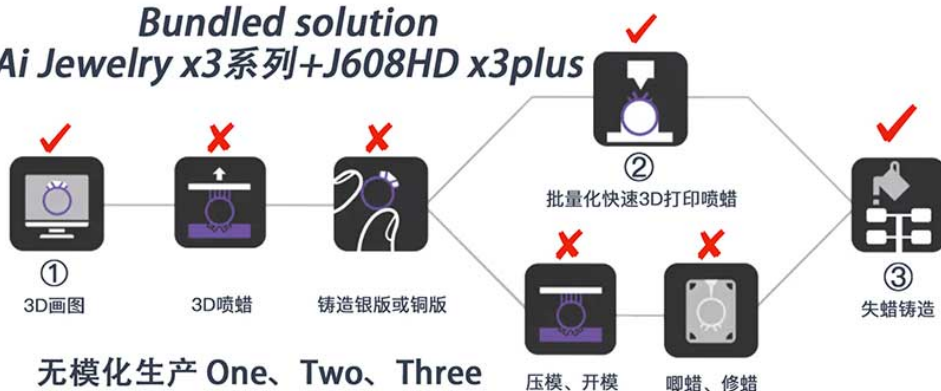
性价比高, 产能大

Sustainability

**X-A-R**  
J608HD x3plus



**Bundled solution**  
**Ai Jewelry x3系列+J608HD x3plus**



總公司地址:

香港九龍紅磡鶴園街11號凱旋工商中心三期8字樓M-5室

Tel: (852)23300090 Fax: (852)26270199

E-mail: anita@yuenkeeho.com

CEO: Sam Deng Cellphone: 13809200618 (微信同號)

分公司地址:

廣州市番禺區沙頭街銀平路3街8號A2

佛山市順德區倫教鎮振華中路1號順匯園2棟8樓

深圳市福田區沙頭街道天安社區泰然五路4號天展大廈4層D座





# ONLINE SHOPPING

Shop with us at [www.ckkgroup.com](http://www.ckkgroup.com)

**TANITA**

**ASEG  
GALLONI**

**Pusch**

**do** OptiVISOR®

**PRESTIGE**

**Elma**



**GROBET USA**

*Hagerty*

**MAILLEFER**

**castaldo**

**FOREDOM**

金勇士  
**Guerriero**

**vallorbe**  
swiss

**LEGOR**



**pH GERMANY**

**BUY**



**E-Catalogue is  
available at  
[www.ckkgroup.com](http://www.ckkgroup.com)**







# ONLINE SHOPPING

Hong Kong International Jewellery Show

4 ~ 8 March, 2025

Booth No. : **5F-B06** (HKCEC)



**BUY NOW**



**Over hundreds of items.  
Door to door Delivery.**

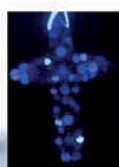
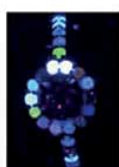
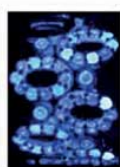
**Shopping at :  
[www.ckkgroup.com](http://www.ckkgroup.com)**



# EzView Series Diamond/CVD Checker

## Specifications:

Model	EzView-100	EzView-100 PLUS
Effective testing area	110*80mm	180*130mm
Sample chamber size	200*240mm	330*240mm
Sample type	Bare diamond, rough diamond, finishing jewellery (ring, bangles, necklace)	
Smallest sample size	0.001 Carat	
Effective Pixels	24.16 million pixels	
Image resolution	6000 x 4000	
Software	Based on Windows 10 system, easy to operate	
Power supply	220V 50Hz / 110V 60Hz	
Dimension	260*300*350 mm	400*300*400 mm
Weight	11Kg	19Kg
Warranty	1 year	



陳廣記(香港)有限公司

Chan Kwong Kee (HK) Co., Ltd.

HONG KONG HEADQUARTERS

Unit G,10/F.,Kaiser Estate Phase 2,

47-53 Man Yue Street, Hunghom, Hong Kong

Tel: (852)2365 6666

Fax: (852)2773 6667

E-mail: ckkhk@ckkgroup.com



# Nano系列便攜CVD鑽石批量檢測儀

Nano和Nano+便攜型鑽石/CVD/HPHT批量檢測儀是一個創新的儀器，小巧輕便，易於攜帶和托運，客戶可以在購買鑽石的現場進行快速檢測，篩選出自己可以確認的天然鑽石再進行購買。

Nano和Nano+也同樣適合於在一些工作空間緊湊的場所中使用，其供電方式靈活，耗電量極低，用一個大容量的充電寶，可以連續工作許多天。

Nano和Nano+檢測準確，速度快，很多海外實驗室都在使用EzView系列檢測儀檢測鑽石、CVD、HPHT。

## 為什麼選擇Nano和Nano+？

這是一台真正便攜型的儀器，尺寸只有手掌大小，重量很輕，可以放在隨身的背包中，並且可以用充電寶供電。如果乘飛機，儀器內部沒有電池，可以空運到任何地方。

儀器的準確度非常高，基於光譜分析原理，檢測更直觀。所以很多國外的實驗室都選用的是EzView系儀器。

儀器和手機之間無線連接，使用起來簡單方便。檢測的時候，手機放在儀器上的固定位置；查看結果的時候，可以把手機拿起來，隨意翻看，執行放大等操作。

檢測速度非常快，只要十幾秒就能完成檢測。

小儀器，大測試區域。可以批量檢測裸石和珠寶成品，包括戒指、耳釘、耳環、手鏈、項鍊，等等。

多種供電方式，可以使用交流電220V/110V供電，也可以使用充電寶供電。

操作非常簡單，只需要手機無線連接儀器，運行相應的App，點擊測試，就會自動完成檢測。

## 規格：

型號	Nano	Nano+ (手鐲檢測)
有效測試區域	80*60mm	80*75mm
樣品倉尺寸	85*70mm	85*85mm
樣品類型	裸石、戒指、項鍊、耳環、等等	裸石、戒指、手鐲、項鍊、耳環、等等
最小樣品尺寸	0.001 Carat	0.001 Carat
軟件	Android	Android
電源	AC220V/110V/DC5V	AC220V/110V/DC5V
機器尺寸	120*120*110 mm	120*120*160 mm
重量	1.38公斤	1.75公斤



Hong Kong International Jewellery Show  
4 ~ 8 March, 2025

Booth No. : **5F-B06** (HKCEC)



陳廣記(香港)有限公司

Chan Kwong Kee (HK) Co., Ltd.

HONG KONG HEADQUARTERS

Unit G, 10/F., Kaiser Estate Phase 2,

47-53 Man Yue Street, Hung Hom, Hong Kong

Tel: (852) 2365 6666

Fax: (852) 2773 6667

E-mail: rachel.chan@ckkgroup.com



# The Ultimate Sourcing Guide for Buyers & Suppliers

**www.GlobalJewelrySpecial.com**

Trade Show Schedule Market Intelligence Free Business Matching Service



With nearly 30 years of experience in publishing a series of professional trade magazines, we have satisfied the sourcing needs of worldwide buyers and suppliers.

Global Jewelry Special provides up-to-date jewelry industry news, product trends, information on major jewelry shows, and supplier information to guide global buyers in making better procurement decisions.

《中國珠寶專輯》("China Jewelry Special") provides useful insights for companies looking to enter the China market. It contains a wealth of information about jewelry trading in China, gathering international jewelry products, recommendations on jewelry brands, as well as market intelligence, new trading policies, and jewelry industry forecasting.



**Global Sources Publications (Holdings) Ltd.**

Tel: (852) 2331 8507 Fax: (852) 2331 8316 Email: info@GlobalJewelrySpecial.com



# SONGA

\_GOLD WHOLESALER since 1935\_

A success due to the passion and the idea of offering always the best. The company was set up in 1935 when Antonio Songa, a goldsmith since 1921, decided to transform his Jewellery manufacturer into a wholesale business. The right commercial approach and innovative sales actions allowed us to become a market leader and a major player in the Jewellery world. Purchase assistance and after sales service carried out by our highly professional staff. "Instant Delivery" provides immediate dispatch of quantities and models selected. Our careful selection based on market demands will allow you to make precise and targeted purchases. An impressive selection of goods in stock all year round to satisfy any order in real time that can be selected through our B2B online platform SongaOnline. Visit [www.songa.it](http://www.songa.it) and join us!







Livior SpA was founded in 1987 and now specializes in industrial production of silver chains. With the strong passion, technical knowledge and innovative ideas of its founder Danilo Bontorin, Livior quickly established itself amongst the leading companies in the industry internationally. Tradition combined with the latest technology, continuous innovation and research in the field of design make Livior a company which has a pre-sence in key international markets and whose name is recognized as a guarantee of the highest quality standards.

### **The Philosophy**

LIVIOR strives to be a "market-oriented" company. Continuous investment in R & D training guarantees its customers: up to data products both in terms of technological development and of current styling, all the while ensuring professional and qualified service. Knowing and understanding the customers, business partners and the consumer's needs, trends and fashions; this summarizes the business philosophy of LIVIOR.

### **Technology**

Our goal is to ensure the customer the supply of products and services of the highest possible level. Continual investments in research and Innovation, together with the use of advanced machinery and highly skilled workforce, enable us to offer a range of product that are highly diversified and always at the peak of technological developments, and as a function of current market trends.








**LIVIOR** spa - Via Rivoltella, 7 - 36060 Romano d'Ezzelino - Vicenza - ITALY  
Tel. +39 0424 512929 - Fax +39 0424 511284 - [info@livior.it](mailto:info@livior.it) - [www.livior.it](http://www.livior.it)





Website: [www.winjew.com.hk](http://www.winjew.com.hk)  Whatsapp: (852) 9147 7332





# Winning Jewellery (H.K.) Co., Ltd. Since 1970

## 9K / 14K / 18K Gold / 925 Silver Clasps and Findings (China Factory) Wholesale Only

**Gold Clasps**



**Gold Findings / Clasps**



**Magnetic Clasps**



**925 Silver Clasps**



JAPANESE STEEL WIRE,  
THREAD, ELASTOMA  
ROUND LEATHER,  
FLAT LEATHER,  
BRAIDED BOLO LEATHER,  
ROUND PLASTIC STRING,  
ROUND COTTON, ETC.

**Diamond Cut Beads**



3/F. Prat Commercial Building, 17-19 Prat Avenue, Tsim Sha Tsui, Kowloon, Hong Kong

Tel.: (852) 2566 5540, 2571 7922

Fax: (852) 2806 8406, 2311 9197

E-mail: winjew@netvigator.com

E-mail: winning@winjew.com.hk

Website: [www.winnjew.com.hk](http://www.winnjew.com.hk)

Whatsapp: (852) 9147 7332





Karizia is one of the leading manufacturers for sterling silver chains, all made with an eye on Italian style and fashion tradition, and one on product quality and durability, that ensures the perfect combination of look and price. Karizia's full product range today includes more than 8000 different basic items in sterling silver, bonded as well as gold, brass, bronze. Besides this, an array of stylish fashion chains completes the catalog, to offer our customers the best choice and mix of product they need to build in their assortment. Karizia is the exclusive manufacturer of sliding adjuster, an innovative clasp system that allows to customize jewelry accessories.







JK Findings has been in business since 1975. Over that time, the industry has come to expect, and JK Findings has delivered, the best in quality, selection, service and price. It's the reason why thousands of jewelry manufacturers and wholesalers in more than 48 countries trust JK Findings as their one source for quality findings, beads, chain and wire - not to mention, custom findings and jewelry. For help or more information, contact our customer service department

Email: [dchan@jkfindings.com](mailto:dchan@jkfindings.com)



# COLPO & ZILIO

## *Handmade in Italy*

Colpo & Zilio S.p.A. is a well-known manufacturing jewellery company situated in Vicenza (Italy), highly specialized in the realization of jewellery clasps in 18kt, 14kt, 9kt and 8kt, in silver and most of them in platinum as well. All the clasps are suitable for necklaces and bracelets, for pearls strands, for semi- precious stones and also for every kind of chain.

We've been working for over 30 years in the jewellery market and we became a key point in the clasps selling to the main jewellery brands all over the world.

Our collection boasts about a wide range of different articles (about 4000) but there's also the possibility to customize the clasps under commission, according to the customer's design idea.

The company can satisfy every request through its R&D department which combines, in every product, beauty and service ability with brand new technology in projecting and prototype designing.

Also, our Production Dept. has been recently improved through more flexible processes and high qualified staff; we can then guarantee high-quality products and the delivery of purchase orders within about 15 days.

Please have a look at it and feel free to contact us for any kind of information you may need about our products: our Export office assistants will be available to give you all the details about prices, product technical features, actual delivery times.



Boutique Service +39 0444 380160  
info@colpo-zilio.com - www.colpo-zilio.com







# COLPO & ZILIO

*Handmade in Italy*



Boutique Service +39 0444 380160  
info@colpo-zilio.com - www.colpo-zilio.com







# LUXOR PREZIOSI

Luxor Preziosi s.r.l., based in Vicenza, creates gold and silver chains, Omega chains, and high-quality diamond cut beads.

Luxor Preziosi s.r.l. began designing, producing, and distributing its goods all over the world utilizing in-house construction machinery, with the goal of combining the deep goldsmith knowledge of Vicenza with modern technology to satisfy the requests from worldwide buyers.

The brand is known for its continual research into production improvement while keeping the high quality, as well as its efforts to build long-term relationships in order to carry on the traditions of their time-honored brand.







# LUXOR PREZIOSI

LUXOR PREZIOSI srl | +39 0424 383860 | [info@luxorpreziosi.com](mailto:info@luxorpreziosi.com) | [www.luxorpreziosi.com](http://www.luxorpreziosi.com)





**yubao** 譽寶® 1993

首飾器材專家  
jewellery machine expert

④ 自動生產織鏈機

AUTOMATIC MACHINE  
FOR THE PRODUCTION OF  
STOCKING MESH CHAIN



全國統一服務熱綫

**800 999 0345**

**400 991 0345**

[www.yubaohk.com](http://www.yubaohk.com)

**Yubao Holdings (HK) Limited**

Unit L1, 8/F., Kaiser Estate Phase 2, No. 47-53 Man Yue Street,  
Hung Hom, Kowloon, Hong Kong.

Tel.: (852) 2994 8989 / 2386 6489

Fax: (852) 2386 6487

E-mail: [yubaohk@yahoo.com.hk](mailto:yubaohk@yahoo.com.hk)



For detection of precious metals such as  
gold, silver, copper, zinc and nickel !



Accurate | Fast | Non-destructive

# EDX 3000

## Energy Dispersive X-ray Fluorescence Spectrometer

So far, Skyray products have been exported to more than 140 countries and regions.

[www.skyray-instrument.com](http://www.skyray-instrument.com)

Jiangsu Skyray Instrument Co. Ltd.





# MACHINES SPECIAL EQUIPMENT TOOLS

for the production of wedding rings

SchumacherTech GmbH & Co. KG  
Engineering & Trading  
Untere Reute 44  
75305 Neuenbürg, Germany  
Phone +49 (0) 7082-79262-0  
Telefax +49 (0) 7082-79262-29

info@schumachertech.com  
www.schumachertech.com



**SCHUMACHERTECH**  
ENGINEERING & TRADING



# DIAMOND MILLING MACHINE FCT 202

for the perfect surface treatment  
of wedding rings

FCT 202 is a horizontal and vertical milling machine specially designed to process wedding rings with diamond tools. Good processing and a simple control guarantee the best results in surface processing. The versatile adjustment possibilities of all axes result in an inexhaustible number of patterns and combinations. The use of diamond tools gives you a perfect gloss finish immediately. The plant is built on the long-established base of Posalux machines.



Type  
Dimensions  
Weight  
Speed  
Connection  
Processing  
Control  
Basis  
Microscope  
Programs

FCT 202  
130 x 81 x 175 cm  
400 kg  
10.000 rpm  
400V, 50/60 Hz  
Horizontal and vertical  
Semi-automatic  
Posalux  
10-x  
Satining, channel milling,  
diamond cutting, milling





# 西班牙MURUA電解拋光器材 Spanish Electrolytic Polishing Machine

銀及銅專用型號  
MURUA Silver & Brass

金專用型號  
MURUA Gold



# 美國FRETZ頂級打金工具 USA Top-class Planishing

FRETZ

打金鎚  
Planishing Hammer

成形工具套裝  
Metal Forming Tools



永和行工業器材有限公司  
Wing Wo Hong Industrial Products Ltd.

香港皇后大道中 184-192 號恆隆大廈20樓  
20/F., Hang Lung House, 184-192  
Queen's Road Central, Hong Kong.  
電話(Tel) : (852) 2544 7932  
傳真(Fax) : (852) 2854 0784  
網址(Website): [www.wingwohong.com](http://www.wingwohong.com)  
電郵(E-Mail) : [wwhkhk@biznetvigator.com](mailto:wwhkhk@biznetvigator.com)





德國BUSCH  
FIG. 411T 開口有坑吸珠針  
BUSCH FIG. 411T Concave

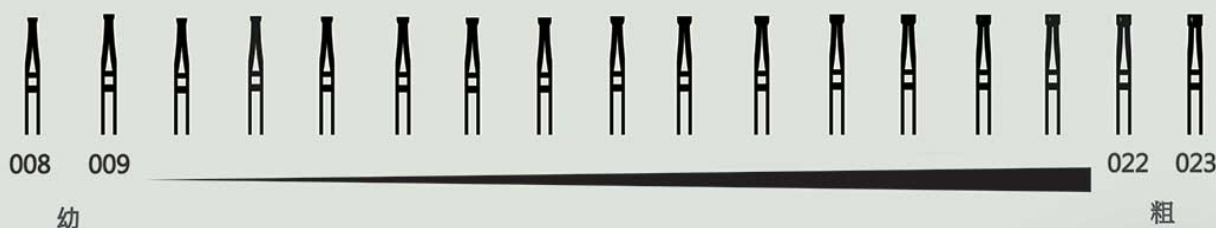


**Busch®**

另有Fig. 411T套裝 (008-020)  
Set of Fig. 411T (008-020)  
also available



各種不同尺寸可供選擇 Available for different



瑞士頂級卓條  
Swiss Top Quality Saw-



PIKE卓條  
PIKE Sawblades

雙劍卓條  
Golden Swords Sawblades



LongPeace卓條  
Longpeace Sawblades



金魚牌卓條  
SUPERPIKE Sawblades



永和行工業器材有限公司  
Wing Wo Hong Industrial Products Ltd.

香港皇后大道中 184-192 號恆隆大廈20樓  
20/F., Hang Lung House, 184-192  
Queen's Road Central, Hong Kong.  
電話(Tel) : (852) 2544 7932  
傳真(Fax) : (852) 2854 0784  
網址(Website): [www.wingwohong.com](http://www.wingwohong.com)  
電郵(E-Mail) : [wwhkhk@biznetvigator.com](mailto:wwhkhk@biznetvigator.com)



One of the Largest Manufacturers



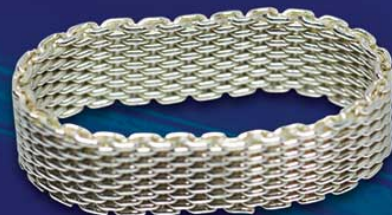
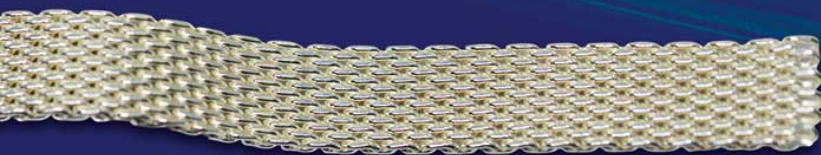
**华伟华** 首饰配件制造厂  
HUA WEI HUA JEWELLERY ACCESSORY LTD.

***Hua Wei Hua Jeweler Accessory Manufacturer***

is a professional jewellery accessories manufactures and specializes in 925 silver findings reputed as the principle of "good quality and reasonable price".



It mainly deals with stamping and oil pressure of two parts in 925 silver jewelry. The products include Earring pins, Butterfly(back), Earring hooks, Chains Pedants, Pearl settings Cluff Links, Square buckles, Lobster buckles, Hollow tube earrings, Finger rings and souvenirs of stamping, and also we can provide with the silver wire and plate service for the customer, etc. The sales markets of products has been expanded from the originally Guangzhou, Shenzhen. Beijing and Shanghai into foreign markets such as America, Canada, Thailand, Denmark, Sweden, Belgium and Japan...





# *of Jewellery Accessory in Asia*



With fifteen years of experience in manufacturing and selling silver products, our factory is equipped with the advanced and standard jewelry equipment, and we have many experienced professional operators producing good quality products according with customers' requirement.

There are only some of the sample pictures for your reference in this advertorial. If you have another specification styles and different requirements, please do not hesitate to contact us by telephone or E-mail to our factory. All the products will be finished in our factory so that we could assure of total satisfaction. We insist on good quality products and on the faith of empressment and credibility so as to establish friendship with you and exploit a beautiful future together.

**华伟华** 首饰配件制造厂  
HUA WEI HUA JEWELLERY ACCESSORY LTD.



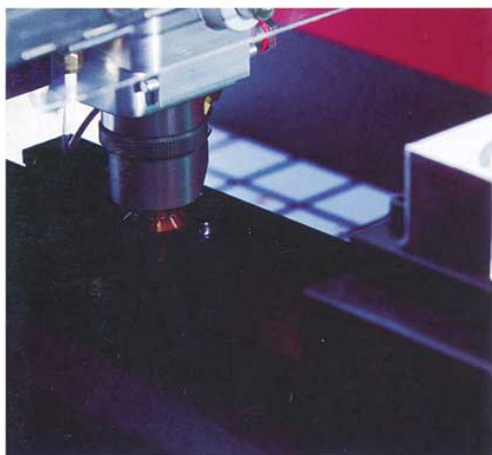
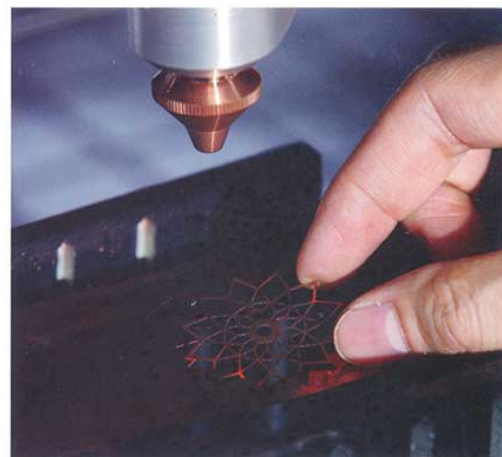
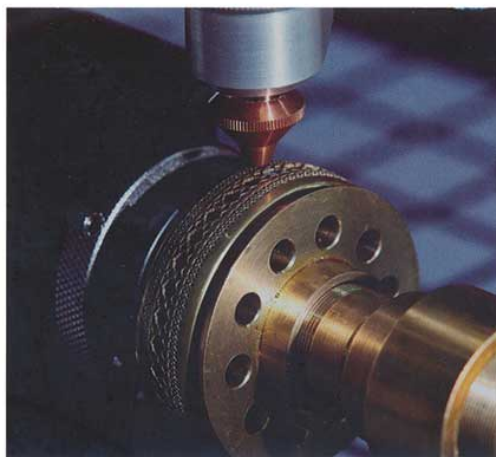
Factory: Gaonan Industrial Park, Gaobian, Shishan Town, Nanhai District, Foshan City, Guangdong, China . P.C: 528 231

Email: wang@hwhg.com Website: <http://www.hwhg.com> & <http://hwh.en.alibaba.com>

Tel: +86-757-8550 6323 or 8559 0393 Fax: +86-757-8558 4892



# Fiber Laser Cutting Machine



[www.cosmolaser.net](http://www.cosmolaser.net)



**CPC—500**  
Fiber Laser Cutting Machine  
**光纤激光切割机**  
Cuts up to 1.2mm  
切割厚度达1.2mm



# Vanta™ GX Precious Metal Analyzer

Simply Accurate Jewelry Analysis

**2023  
New Version**



**EVIDENT**

Sole Agent : Silver and Gold Co., Ltd.

Unit i-2, 6/F, Summit Building, 30 Man Yue Street, KLN, Hong Kong  
Tel: 852 2303 0449 Email: [info@sensesgroup.hk](mailto:info@sensesgroup.hk)



# Special Introduce for *Production Equipment*



**Yuen Kee Ho Machinery Ltd.**

Email: [anita@yuenkeehomachine.com](mailto:anita@yuenkeehomachine.com)

High-resilience multi-nozzle  
3D wax printing machine  
(3XAAR nozzles)

AI Jewelry x 3 Series

**Contenti**

Email: [info@contenti.com](mailto:info@contenti.com)

Vacuum Investing & De-gassing Table





# Special Introduce for *Production Equipment*



**Master International Company**

Email: [info@masterintl.com](mailto:info@masterintl.com)

---

Ultrasonic cleaner

**Rosenthal Jewelers Supply**

Email: [info@rjsintl.com](mailto:info@rjsintl.com)

---

DXL Desktop Analyzer





# Special Introduce for *Production Equipment*



**Chan Kwong Kee (HK) Co., Ltd.**

Email: [ckkhk@ckkgroup.com](mailto:ckkhk@ckkgroup.com)

**3D噴蠟打印機**

**Precision Wax Patterns Printer**

**Yihui Casting Technology  
Company Limited**

Email: [sales@yihuicasting.com](mailto:sales@yihuicasting.com)

**Pro Series Fast Shaping 3D Printer**



PRO 100

PRO 150

PRO 200



# Special Introduce for *Production Equipment*



**Wing Wo Hong  
Industrial Products Ltd.**

Email: [wwhhk@biznetvigator.com](mailto:wwhhk@biznetvigator.com)

---

鐳射雕刻及刻字機  
Starlight and Firescan



**To Shing Kee Company Limited**

Email: [enquiry@toshingkee.com](mailto:enquiry@toshingkee.com)

---

**Cutting Machine TSK 4023**





# Discovering Infinite Possibilities and Business Opportunities

## with Extensive Applications of 3D Printing

Since its establishment in 2015, "Hong Kong 3D Printing Association" (HK3DPA) has been dedicated to connecting industries and communities of all ages and backgrounds to explore the potential of 3D printing and promote the applications of the technology in a greater spectrum. 3D printing has been rapidly developing and is no longer used simply for prototyping, but also as a tool of creativity and innovation for business opportunities. To keep abreast of the market trends, the Association organizes diverse activities, such as exhibitions, workshops and seminars, to share the latest market news about 3D printing technology as well as to promote the promising future of related applications to different industries and communities.



Mr. Calvin Wu, Chairman of HK3DPA

### Creating New Business Opportunities

"The common misconception is that 3D printing is producing simple plastic shapes.", commented Mr. Calvin Wu, Chairman of HK3DPA. The process of 3D printing is more complex and sophisticated than it may sound or how it is currently perceived by most people. In view of this, the Association has the vision to create new business opportunities of 3D printing by showing and educating the public the concepts and applications of the technology, including 3D design, 3D modeling and 3D scanning, and how these can be developed and extended into different business sectors in a commercially sustainable way. With its substantial knowledge in 3D printing and unique insights into the market, the Association aims to develop business opportunities by inspiring innovation and sharing the convenience and enjoyment of the technology.



Hong Kong 3D Printing Association 4th Committee Inauguration Ceremony 2021



## Supporting the Next Generations

HK3DPA highly values the local youth development and understands the importance of cultivating talents from young age. The Association constantly encourages local young people and start-ups to make use of 3D printing and related applications to express their creativity and transform their ingenious ideas into products through extensive workshops and training courses. The Association will continue to actively collaborate with different industries and communities in pursuit of stimulating the local youth development in 3D printing; as Chairman Mr. Wu added, “subsequently, this could help the young people discover their passions or inspire them to create something impactful.”



## 3D Printing Applications in Industries

With technological advancement and promotion in industrial applications, 3D printing has been growing mature and increasingly applied in various industries. The toy industry is one of which that has embraced the technology in earlier years. 3D printed toys can be personalized with customers' needs, with shorter time and lower cost required to produce. 3D printing is versatile and utilized to make toy spare parts and repair broken toys as well.

Meanwhile, jewelry making is another industry that has adopted 3D printing to increase the productivity and efficiency. For instance, the jewelry industry creates patterns for investment casting and complex designs with 3D printing. Compared to the traditional pattern making techniques, 3D printing significantly reduces the production time and cost.

It is evident that 3D-printed materials are becoming applicable and valuable to more fields. 3D-printed metal implants, for example, demonstrate how 3D printing can be applied in the medical domain. The technology in medical application enables customized and high-precision surgical tools and implants, providing alternatives or even solutions to medical needs.

Given the infinite possibility in 3D printing, the technology is also applied in marine conservation. 3D-printed terracotta reef tiles are created to facilitate coral restoration and save the degraded marine ecosystems. With 3D printing related applications, the reef tiles can be custom-made with the best and most suitable materials and designs for the highest efficiency in saving the marine life.

## Looking Forward

Despite its achievement in promoting 3D printing, Hong Kong 3D Printing Association will strive to keep exploring the potential of the technology and continue to be the platform of connecting different industries and communities to popularize 3D printing in the future. Through comprehensive activities and training, together with the technological improvement, the Association aspires to share with the public about the relevant applications of 3D printing to inspire their innovation and creativity as well as to pave the way for the technology in Hong Kong.





# Special Introduce for Parts, Findings & Clasps

**Tin Fung Jewellery Limited**

Email: [tfhk@tfj.com.hk](mailto:tfhk@tfj.com.hk)



**Winning Jewellery (H.K.) Co., Ltd.**

Email: [winning@winjew.com.hk](mailto:winning@winjew.com.hk)





# Special Introduce for *Parts, Findings & Clasps*

Yuen Kee Ho Machinery Limited

Email: [anita@yuenkeehomachine.com](mailto:anita@yuenkeehomachine.com)



Leach & Garner (HK) Ltd.

Email: [info@lghk.com](mailto:info@lghk.com)





# Special Introduce for *Parts, Findings & Clasps*

**Hua Wei Hua Jewellery Accessory Ltd.**

Email: [wang@hwhg.com](mailto:wang@hwhg.com)



**Shing Kee Ho Jewellery Tools Ltd.**

Email: [skhjt@shingkeeho.com.hk](mailto:skhjt@shingkeeho.com.hk)





# Special Introduce for Parts, Findings & Clasps

## JK Findings

**Email: [dchan@jkfindings.com](mailto:dchan@jkfindings.com)**



# Goldenage International Ltd.

**Email: [sales@goldenageintl.com](mailto:sales@goldenageintl.com)**





# Special Introduce for *Parts, Findings & Clasps*

**Cooksongold**

Email: [info@cooksongold.com](mailto:info@cooksongold.com)



**New Century Findings Limited**

Email: [sales9@ncfindings.com](mailto:sales9@ncfindings.com)





# Special Introduce for Parts, Findings & Clasps

**Email: [info@colpo-zilio.com](mailto:info@colpo-zilio.com)**



**Email: [enquiry@cobblee.com](mailto:enquiry@cobblee.com)**







## LEGOR Group Hong Kong

Email: [info\\_hongkong@legor.com](mailto:info_hongkong@legor.com)

Legor Group S.p.A. 從1979年開始致力於珠寶生產和加工的市場。



本公司專注於補口，電鍍藥水和焊料的生產。我們提供的補口適用於不同的工序（倒模和機械加工）和不同金屬的生產過程（黃金，銀，鉑，鈀）；而我們的電鍍藥水（銻，黃金，鈦，鈀...）提供裝飾性和保護性的表層（防氧化，耐磨）；我們提供的焊料可符合不同工業的需求。我們重視客戶並了解他們的需求，將其轉化為高質量的產品。長久以來客戶的滿意度是我們優越表現的實證。

選擇 Legor Group，意味著能夠依靠擁有跨國組織企業的穩固性、意大利製造產品的技術和可靠性。本公司在香港和內地的分部直接引入意大利總部的產品提供給本地的客戶，以確保產品的質素。最重要的是，我們不只是出售產品，更提供一切技術支援給於客戶。我們將隨時為覆蓋全球的客戶提供優質的產品和服務。

We would like to introduce our company Legor Group S.p.A that has been in Jewellery industry since 1979.

Our company is working continuously on master alloy, plating solution and brazing alloy. We provide master alloy which could be used in different process(casting and mechanical working) with different metals(Gold, Silver, Platinum and Palladium); And our plating solutions(Rhodium, Gold, Ruthenium, Palladium...)is designed for both decoration and protection(anti-tarnish, non-scratch); And our brazing materials designed to meet all sorts of industrial soldering needs. We aim to provide high quality products to meet all the needs of customers. We have been an established company with an excellent track record for the best customer satisfaction.



Choosing Legor Group means being able to rely on the solidity of a company with a multinational organization and the technology and dependability of a Made in Italy product. Our Hong Kong branch introduces Italy Headquarter's product to local customers which ensure the quality and availabilities. Most importantly, we are not only selling products but also providing professional technical supports to our customers. Legor Group offers quality products and services around the globe at any time.







**YING LEE**  
Jewellery & Finding

英利寶石首飾廠有限公司  
YING LEE JEWELLERY FACTORY LTD.

總公司：香港九龍紅磡鶴園街9-11A號凱旋工商中心三期5樓M05-M06室  
Head Office: Flat M05-M06, 5/F, Kaiser Estate, Phase 3, 9-11A  
Hok Yuen Street, Hung Hom, Kowloon, Hong Kong.  
中國廠址：中國廣東省廣州市花都區新華街迎賓大道168號  
珠寶城A區C幢地下全層

Tel: 852-2366 2233 852-2388 0097 Fax: 852-2739 6102  
Website: <http://www.yinglee.com.hk> E-mail: [info@yinglee.com.hk](mailto:info@yinglee.com.hk)





## The 2025 International Gold Jewelry Market: Challenges Amidst Record Prices

Since the beginning of 2025, social media discussions around buying gold have surged. Many young investors are increasingly viewing gold as an essential component of their asset allocation strategy. Monthly investments in gold are seen as "planting the seeds of wealth," while purchasing gold jewelry symbolizes "achieving one's first financial milestone." Various investment options, including physical gold, gold ETFs, and gold futures trading, have gained popularity among younger demographics.

According to public data from the World Gold Council, gold prices reached new highs 40 times in 2024. Global gold investment increased by 25%, reaching a four-year peak of 1,180 tons, largely fueled by gold ETFs. As investor and consumer demographics shift, the market landscape of the gold industry is quietly transforming.

### Demand Dynamics in the Gold Sector

Gold's unique properties lead to downstream demand being primarily driven by consumer and investment needs. Consumer demand is influenced by factors such as disposable income and marriage rates, while investment demand is predominantly characterized by purchases of gold bars and coins, which are highly sensitive to gold price fluctuations.

Since 2020, the gold price has entered a bullish cycle, propelling upgrades in gold jewelry craftsmanship. The rising demand for non-wedding-related gold accessories, driven by young consumers' enthusiasm for gold, has opened avenues for fashionable gold items, including zodiac-themed and lucky charm pieces. The overall gold market has clearly progressed to the "next level." Furthermore, with multiple interest rate cuts in China, gold is increasingly favored as a hedge against inflation and geopolitical risks, driving prices higher and raising industry barriers, which accentuates the competitive edge of leading brands.

### Market Challenges and Opportunities

High gold prices have suppressed demand for gold jewelry, with consumption falling by 11% to 1,877 tons. Nevertheless, the total expenditure on gold jewelry grew by 9%, reaching \$144 billion, indicating that while consumers are purchasing less weight in gold due to high prices, their spending budgets for jewelry remain intact. In the Chinese market, gold jewelry demand dropped by 24% to 479 tons, while India demonstrated resilience, experiencing only a slight decline of 2% amidst record high prices in 2024. This was bolstered by the Indian government reducing import duties on gold from 15% to 6% in July, stimulating demand. Additionally, gold investment demand in the ASEAN market saw substantial growth last year, with double-digit annual increases reported in Singapore, Indonesia, Malaysia, and Thailand. Off-exchange investments remained stable, reflecting high-net-worth individuals' desire to hedge against geopolitical and economic uncertainties.





## **Innovations Driving Growth**

The evolution of e-commerce channels has significantly accelerated gold consumption. Live-stream shopping has enhanced interaction and entertainment, making gold jewelry more accessible to a wider audience. As a result, the retail growth rate for online gold jewelry far exceeds that of traditional channels. The changing consumer landscape is shifting gold jewelry from a wedding essential to a self-indulgent purchase, progressively expanding the market. With a pronounced trend toward younger consumers, continuous product innovation is emerging alongside evolving consumer demographics. Gold consumption is no longer an elite expenditure; more consumers are viewing gold as a form of emotional value. Brands that emphasize design, craftsmanship, and strategic long-term investments in consumer engagement will likely thrive, aligning with the post-pandemic shift toward rational spending and emotional resonance.

## **Strategic Opportunities in a Reconstructed Supply Chain**

The restructuring of the global gold supply chain presents strategic opportunities. Observing from a historical perspective, the current volatility in the gold market is fundamentally a precursor to the restructuring of the international monetary system. For the jewelry industry, this transformation is both a test of cost pressures and a pivotal opportunity for transformation and upgrading. As the monetary attributes of gold are reactivated in the digital economy, companies that proactively embrace financialization, digitization, and globalization will secure leading positions in the upcoming industrial revolution.

The international gold jewelry market is evolving with rising prices and shifting consumer preferences. The increasing interest in gold among younger investors not only reflects a savvy approach to asset management but also signals a potential revival of craftsmanship in the jewelry sector. As consumers seek both value and emotional connection in their purchases, the industry has a unique opportunity to blend tradition with modernity, creating products that resonate on multiple levels.





# *Special Introduce* *for* **Production Material, Tools & Supplies**

**Orion Incorporation Limited**

Email: [info@orionzero.hk](mailto:info@orionzero.hk)

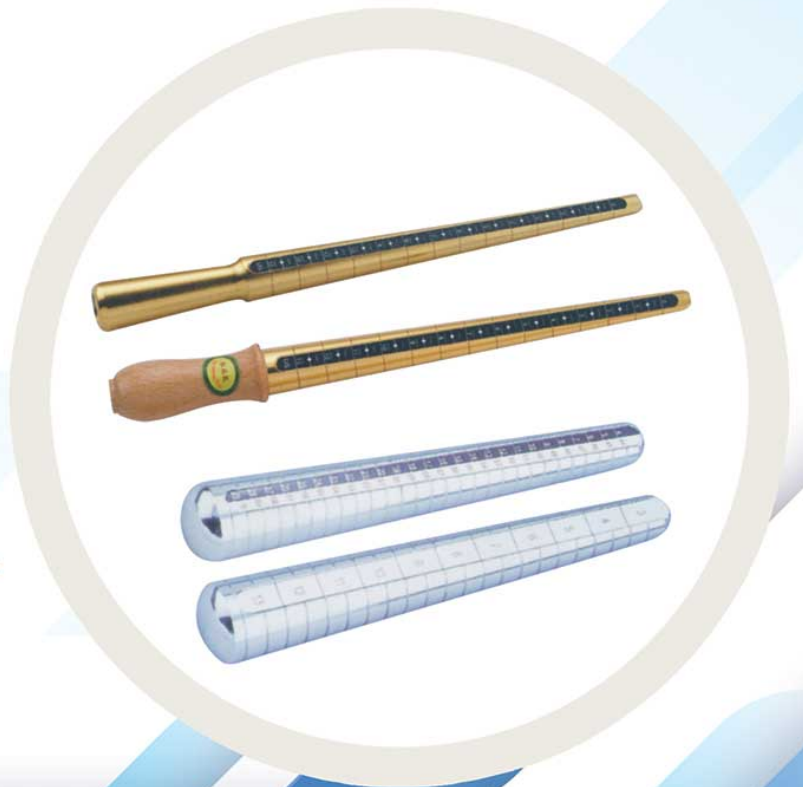
## Electronplating Tools



**To Shing Kee Company Limited**

Email: [enquiry@toshingkee.com](mailto:enquiry@toshingkee.com)

## Aluminum Ring Sticks





# *Special Introduce* *for* ***Production Material,*** ***Tools & Supplies***



**Advance Industrial Co.**

Email: [info@advance-industrial.com](mailto:info@advance-industrial.com)

Alloy for Silver

**Ningbo Crysdiam  
Industrial Technology Co., Ltd.**

Email: [office@crysdiam.com](mailto:office@crysdiam.com)



UPC Single Crystalline  
Diamond Cutting Tool



Diamond Scalpel



Ultra-precision Single  
Crystalline Diamond Blade



UPC Single Crystalline  
Diamond Cutting Tool



# *Special Introduce for **Production Material, Tools & Supplies***



**LEGOR Group Hong Kong**

Email: [info\\_hongkong@legor.com](mailto:info_hongkong@legor.com)

**Continuously on master alloy,  
plating solution and brazing ally**

**Kingsway Jewelry Supplies Co., Ltd.**

Email: [info@kingswaytech.com.hk](mailto:info@kingswaytech.com.hk)

**Ferris® Beads • Injection Waxes**





# *Special Introduce* **for *Production Material,*** ***Tools & Supplies***



**Mingyu Jewelry Supplies Co.**

Email: [sales@hkmingyu.com](mailto:sales@hkmingyu.com)

Tool Kit

**Parksian Company**  
Email: [sales@parksian.com](mailto:sales@parksian.com)

Gold & Carat Balances





# The Ultimate Sourcing Guide for Buyers & Suppliers



**Global Sources Publications (Holdings) Ltd.**

Hong Kong Office : Tel: (852) 2331 8507 Fax: (852) 2331 8316 Email: [info@GlobalJewelrySpecial.com](mailto:info@GlobalJewelrySpecial.com)



# www.GlobalJewelrySpecial.com

Home About Us Buyer Enquiry Subscription Contact Us Basket(0)

**www.GlobalJewelrySpecial.com**  
The Best Sources For Trade Business!  
Global Sources Publications (Holdings) Limited

展覽會專業推介  
Global Jewelry's Recommendation for  
Top Jewellery Supplier  
卓越珠寶商

Company  Search

**Categories**

- Fine Jewelry
- Pearls
- Loose Diamonds, Precious Gemstones
- Fashion Jewelry
- Brand Name Jewelry
- Packaging
- Jewelry Watch
- Jewelry Accessories, Tools & Equipment

**Fine Jewelry**

Perfect Jewellery, C & J Jewellers (China) Ltd., Pearshine Jewellery H.K. Ltd., NAGAHORI TOKYO/HONG KONG, A & J Jewellery Manufacturers Ltd., Wing Fung Jewellery Mfg. Ltd., Trend Jewellery Ltd., Gold Bright Hong Kong Group Ltd., BSJ INTERNATIONAL, BSI International (BSI STAR)

**Pearl / Gemstone / Jade / Opal Jewelry**

Chun Ming Wing Pearl International Limited, Fook Yee Pearl Co., Ltd., Pearshine Jewellery H.K. Ltd., J Ocean Pearl Jewellery Ltd., Splendid Pearl & Jewellery Ltd., Magic Crystal, R & P Pearl, WY, Wai Yip Pearl Company Ltd., Opals Mine Factory Ltd., CHERRY JEWELLERY

**Silver / Meteorite / Stainless Steel Jewelry**

METALRIGHT, STEEL, iPoint Stainless Steel, MICA, YING LEE, Metalright Jewellery Ltd., Niles Steel Jewellery Co. Ltd., iPoint Steel Solution Company, Mica Silver Jewellery Manufacturing (China) Co., Ying Lee Jewellery Factory Ltd.

**Jewelry Accessories, Tools & Equipment**

TIN FUNG JEWELLERY LTD., YKM, Yuen Kee Ho Machinery Ltd., Chin Kwong Jew (HK) Co. Ltd., Wining Jewellery (HK) Co. Ltd., Wing Wo Hong Industrial Products Ltd.

**Packaging**

GLAMOUR BOX, LUXURY, ELEGANTE ARTS, Milton, Glamour Box Manufacturing Ltd., Jewellery Box Mfg. Ltd., LUXURY, ELEGANTE ARTS, Milton Industrial Ltd.

**Key Recommendations**

Silver Jewellery, Gold Jewellery, Silver Jewellery, Coloured Gemstone Jewellery, Coloured Gemstone Jewellery, Coloured Gemstone Jewellery

**Market News**

**JCK** Friday, June 6 - Monday, June 9, 2025  
WILLIAMS & SON, Hong Kong, 7-9, 10-12, 13-14, 15-16, 17-18, 19-20, 21-22, 23-24, 25-26, 27-28, 29-30, 31-32, 33-34, 35-36, 37-38, 39-40, 41-42, 43-44, 45-46, 47-48, 49-50, 51-52, 53-54, 55-56, 57-58, 59-60, 61-62, 63-64, 65-66, 67-68, 69-70, 71-72, 73-74, 75-76, 77-78, 79-80, 81-82, 83-84, 85-86, 87-88, 89-90, 91-92, 93-94, 95-96, 97-98, 99-100, 101-102, 103-104, 105-106, 107-108, 109-110, 111-112, 113-114, 115-116, 117-118, 119-120, 121-122, 123-124, 125-126, 127-128, 129-130, 131-132, 133-134, 135-136, 137-138, 139-140, 141-142, 143-144, 145-146, 147-148, 149-150, 151-152, 153-154, 155-156, 157-158, 159-160, 161-162, 163-164, 165-166, 167-168, 169-170, 171-172, 173-174, 175-176, 177-178, 179-180, 181-182, 183-184, 185-186, 187-188, 189-190, 191-192, 193-194, 195-196, 197-198, 199-200, 201-202, 203-204, 205-206, 207-208, 209-210, 211-212, 213-214, 215-216, 217-218, 219-220, 221-222, 223-224, 225-226, 227-228, 229-230, 231-232, 233-234, 235-236, 237-238, 239-240, 241-242, 243-244, 245-246, 247-248, 249-250, 251-252, 253-254, 255-256, 257-258, 259-260, 261-262, 263-264, 265-266, 267-268, 269-270, 271-272, 273-274, 275-276, 277-278, 279-280, 281-282, 283-284, 285-286, 287-288, 289-290, 291-292, 293-294, 295-296, 297-298, 299-300, 301-302, 303-304, 305-306, 307-308, 309-310, 311-312, 313-314, 315-316, 317-318, 319-320, 321-322, 323-324, 325-326, 327-328, 329-330, 331-332, 333-334, 335-336, 337-338, 339-340, 341-342, 343-344, 345-346, 347-348, 349-350, 351-352, 353-354, 355-356, 357-358, 359-360, 361-362, 363-364, 365-366, 367-368, 369-370, 371-372, 373-374, 375-376, 377-378, 379-380, 381-382, 383-384, 385-386, 387-388, 389-390, 391-392, 393-394, 395-396, 397-398, 399-400, 401-402, 403-404, 405-406, 407-408, 409-410, 411-412, 413-414, 415-416, 417-418, 419-420, 421-422, 423-424, 425-426, 427-428, 429-430, 431-432, 433-434, 435-436, 437-438, 439-440, 441-442, 443-444, 445-446, 447-448, 449-450, 451-452, 453-454, 455-456, 457-458, 459-460, 461-462, 463-464, 465-466, 467-468, 469-470, 471-472, 473-474, 475-476, 477-478, 479-480, 481-482, 483-484, 485-486, 487-488, 489-490, 491-492, 493-494, 495-496, 497-498, 499-500, 501-502, 503-504, 505-506, 507-508, 509-510, 511-512, 513-514, 515-516, 517-518, 519-520, 521-522, 523-524, 525-526, 527-528, 529-530, 531-532, 533-534, 535-536, 537-538, 539-540, 541-542, 543-544, 545-546, 547-548, 549-550, 551-552, 553-554, 555-556, 557-558, 559-560, 561-562, 563-564, 565-566, 567-568, 569-570, 571-572, 573-574, 575-576, 577-578, 579-580, 581-582, 583-584, 585-586, 587-588, 589-590, 591-592, 593-594, 595-596, 597-598, 599-600, 601-602, 603-604, 605-606, 607-608, 609-610, 611-612, 613-614, 615-616, 617-618, 619-620, 621-622, 623-624, 625-626, 627-628, 629-630, 631-632, 633-634, 635-636, 637-638, 639-640, 641-642, 643-644, 645-646, 647-648, 649-650, 651-652, 653-654, 655-656, 657-658, 659-660, 661-662, 663-664, 665-666, 667-668, 669-670, 671-672, 673-674, 675-676, 677-678, 679-680, 681-682, 683-684, 685-686, 687-688, 689-690, 691-692, 693-694, 695-696, 697-698, 699-700, 701-702, 703-704, 705-706, 707-708, 709-710, 711-712, 713-714, 715-716, 717-718, 719-720, 721-722, 723-724, 725-726, 727-728, 729-730, 731-732, 733-734, 735-736, 737-738, 739-740, 741-742, 743-744, 745-746, 747-748, 749-750, 751-752, 753-754, 755-756, 757-758, 759-760, 761-762, 763-764, 765-766, 767-768, 769-770, 771-772, 773-774, 775-776, 777-778, 779-780, 781-782, 783-784, 785-786, 787-788, 789-790, 791-792, 793-794, 795-796, 797-798, 799-800, 801-802, 803-804, 805-806, 807-808, 809-810, 811-812, 813-814, 815-816, 817-818, 819-820, 821-822, 823-824, 825-826, 827-828, 829-830, 831-832, 833-834, 835-836, 837-838, 839-840, 841-842, 843-844, 845-846, 847-848, 849-850, 851-852, 853-854, 855-856, 857-858, 859-860, 861-862, 863-864, 865-866, 867-868, 869-870, 871-872, 873-874, 875-876, 877-878, 879-880, 881-882, 883-884, 885-886, 887-888, 889-890, 891-892, 893-894, 895-896, 897-898, 899-900, 901-902, 903-904, 905-906, 907-908, 909-910, 911-912, 913-914, 915-916, 917-918, 919-920, 921-922, 923-924, 925-926, 927-928, 929-930, 931-932, 933-934, 935-936, 937-938, 939-940, 941-942, 943-944, 945-946, 947-948, 949-950, 951-952, 953-954, 955-956, 957-958, 959-960, 961-962, 963-964, 965-966, 967-968, 969-970, 971-972, 973-974, 975-976, 977-978, 979-980, 981-982, 983-984, 985-986, 987-988, 989-990, 991-992, 993-994, 995-996, 997-998, 999-1000, 1001-1002, 1003-1004, 1005-1006, 1007-1008, 1009-1010, 1011-1012, 1013-1014, 1015-1016, 1017-1018, 1019-1020, 1021-1022, 1023-1024, 1025-1026, 1027-1028, 1029-1030, 1031-1032, 1033-1034, 1035-1036, 1037-1038, 1039-1040, 1041-1042, 1043-1044, 1045-1046, 1047-1048, 1049-1050, 1051-1052, 1053-1054, 1055-1056, 1057-1058, 1059-1060, 1061-1062, 1063-1064, 1065-1066, 1067-1068, 1069-1070, 1071-1072, 1073-1074, 1075-1076, 1077-1078, 1079-1080, 1081-1082, 1083-1084, 1085-1086, 1087-1088, 1089-1090, 1091-1092, 1093-1094, 1095-1096, 1097-1098, 1099-1100, 1101-1102, 1103-1104, 1105-1106, 1107-1108, 1109-1110, 1111-1112, 1113-1114, 1115-1116, 1117-1118, 1119-1120, 1121-1122, 1123-1124, 1125-1126, 1127-1128, 1129-1130, 1131-1132, 1133-1134, 1135-1136, 1137-1138, 1139-1140, 1141-1142, 1143-1144, 1145-1146, 1147-1148, 1149-1150, 1151-1152, 1153-1154, 1155-1156, 1157-1158, 1159-1160, 1161-1162, 1163-1164, 1165-1166, 1167-1168, 1169-1170, 1171-1172, 1173-1174, 1175-1176, 1177-1178, 1179-1180, 1181-1182, 1183-1184, 1185-1186, 1187-1188, 1189-1190, 1191-1192, 1193-1194, 1195-1196, 1197-1198, 1199-1200, 1201-1202, 1203-1204, 1205-1206, 1207-1208, 1209-1210, 1211-1212, 1213-1214, 1215-1216, 1217-1218, 1219-1220, 1221-1222, 1223-1224, 1225-1226, 1227-1228, 1229-1230, 1231-1232, 1233-1234, 1235-1236, 1237-1238, 1239-1240, 1241-1242, 1243-1244, 1245-1246, 1247-1248, 1249-1250, 1251-1252, 1253-1254, 1255-1256, 1257-1258, 1259-1260, 1261-1262, 1263-1264, 1265-1266, 1267-1268, 1269-1270, 1271-1272, 1273-1274, 1275-1276, 1277-1278, 1279-1280, 1281-1282, 1283-1284, 1285-1286, 1287-1288, 1289-1290, 1291-1292, 1293-1294, 1295-1296, 1297-1298, 1299-1300, 1301-1302, 1303-1304, 1305-1306, 1307-1308, 1309-1310, 1311-1312, 1313-1314, 1315-1316, 1317-1318, 1319-1320, 1321-1322, 1323-1324, 1325-1326, 1327-1328, 1329-1330, 1331-1332, 1333-1334, 1335-1336, 1337-1338, 1339-1340, 1341-1342, 1343-1344, 1345-1346, 1347-1348, 1349-1350, 1351-1352, 1353-1354, 1355-1356, 1357-1358, 1359-1360, 1361-1362, 1363-1364, 1365-1366, 1367-1368, 1369-1370, 1371-1372, 1373-1374, 1375-1376, 1377-1378, 1379-1380, 1381-1382, 1383-1384, 1385-1386, 1387-1388, 1389-1390, 1391-1392, 1393-1394, 1395-1396, 1397-1398, 1399-1400, 1401-1402, 1403-1404, 1405-1406, 1407-1408, 1409-1410, 1411-1412, 1413-1414, 1415-1416, 1417-1418, 1419-1420, 1421-1422, 1423-1424, 1425-1426, 1427-1428, 1429-1430, 1431-1432, 1433-1434, 1435-1436, 1437-1438, 1439-1440, 1441-1442, 1443-1444, 1445-1446, 1447-1448, 1449-1450, 1451-1452, 1453-1454, 1455-1456, 1457-1458, 1459-1460, 1461-1462, 1463-1464, 1465-1466, 1467-1468, 1469-1470, 1471-1472, 1473-1474, 1475-1476, 1477-1478, 1479-1480, 1481-1482, 1483-1484, 1485-1486, 1487-1488, 1489-1490, 1491-1492, 1493-1494, 1495-1496, 1497-1498, 1499-1500, 1501-1502, 1503-1504, 1505-1506, 1507-1508, 1509-1510, 1511-1512, 1513-1514, 1515-1516, 1517-1518, 1519-1520, 1521-1522, 1523-1524, 1525-1526, 1527-1528, 1529-1530, 1531-1532, 1533-1534, 1535-1536, 1537-1538, 1539-1540, 1541-1542, 1543-1544, 1545-1546, 1547-1548, 1549-1550, 1551-1552, 1553-1554, 1555-1556, 1557-1558, 1559-1560, 1561-1562, 1563-1564, 1565-1566, 1567-1568, 1569-1570, 1571-1572, 1573-1574, 1575-1576, 1577-1578, 1579-1580, 1581-1582, 1583-1584, 1585-1586, 1587-1588, 1589-1590, 1591-1592, 1593-1594, 1595-1596, 1597-1598, 1599-1600, 1601-1602, 1603-1604, 1605-1606, 1607-1608, 1609-1610, 1611-1612, 1613-1614, 1615-1616, 1617-1618, 1619-1620, 1621-1622, 1623-1624, 1625-1626, 1627-1628, 1629-1630, 1631-1632, 1633-1634, 1635-1636, 1637-1638, 1639-1640, 1641-1642, 1643-1644, 1645-1646, 1647-1648, 1649-1650, 1651-1652, 1653-1654, 1655-1656, 1657-1658, 1659-1660, 1661-1662, 1663-1664, 1665-1666, 1667-1668, 1669-1670, 1671-1672, 1673-1674, 1675-1676, 1677-1678, 1679-1680, 1681-1682, 1683-1684, 1685-1686, 1687-1688, 1689-1690, 1691-1692, 1693-1694, 1695-1696, 1697-1698, 1699-1700, 1701-1702, 1703-1704, 1705-1706, 1707-1708, 1709-1710, 1711-1712, 1713-1714, 1715-1716, 1717-1718, 1719-1720, 1721-1722, 1723-1724, 1725-1726, 1727-1728, 1729-1730, 1731-1732, 1733-1734, 1735-1736, 1737-1738, 1739-1740, 1741-1742, 1743-1744, 1745-1746, 1747-1748, 1749-1750, 1751-1752, 1753-1754, 1755-1756, 1757-1758, 1759-1760, 1761-1762, 1763-1764, 1765-1766, 1767-1768, 1769-1770, 1771-1772, 1773-1774, 1775-1776, 1777-1778, 1779-1780, 1781-1782, 1783-1784, 1785-1786, 1787-1788, 1789-1790, 1791-1792, 1793-1794, 1795-1796, 1797-1798, 1799-1800, 1801-1802, 1803-1804, 1805-1806, 1807-1808, 1809-1810, 1811-1812, 1813-1814, 1815-1816, 1817-1818, 1819-1820, 1821-1822, 1823-1824, 1825-1826, 1827-1828, 1829-1830, 1831-1832, 1833-1834, 1835-1836, 1837-1838, 1839-1840, 1841-1842, 1843-1844, 1845-1846, 1847-1848, 1849-1850, 1851-1852, 1853-1854, 1855-1856, 1857-1858, 1859-1860, 1861-1862, 1863-1864, 1865-1866, 1867-1868, 1869-1870, 1871-1872, 1873-1874, 1875-1876, 1877-1878, 1879-1880, 1881-1882, 1883-1884, 1885-1886, 1887-1888, 1889-1890, 1891-1892, 1893-1894, 1895-1896, 1897-1898, 1899-1900, 1901-1902, 1903-1904, 1905-1906, 1907-1908, 1909-1910, 1911-1912, 1913-1914, 1915-1916, 1917-1918, 1919-1920, 1921-1922, 1923-1924, 1925-1926, 1927-1928, 1929-1930, 1931-1932, 1933-1934, 1935-1936, 1937-1938, 1939-1940, 1941-1942, 1943-1944, 1945-1946, 1947-1948, 1949-1950, 1951-1952, 1953-1954, 1955-1956, 1957-1958, 1959-1960, 1961-1962, 1963-1964, 1965-1966, 1967-1968, 1969-1970, 1971-1972, 1973-1974, 1975-1976, 1977-1978, 1979-1980, 1981-1982, 1983-1984, 1985-1986, 1987-1988, 1989-1990, 1991-1992, 1993-1994, 1995-1996, 1997-1998, 1999-2000, 2001-2002, 2003-2004, 2005-2006, 2007-2008, 2009-2010, 2011-2012, 2013-2014, 2015-2016, 2017-2018, 2019-2020, 2021-2022, 2023-2024, 2025-2026, 2027-2028, 2029-2030, 2031-2032, 2033-2034, 2035-2036, 2037-2038, 2039-2040, 2041-2042, 2043-2044, 2045-2046, 2047-2048, 2049-2050, 2051-2052, 2053-2054, 2055-2056, 2057-2058, 2059-2060, 2061-2062, 2063-2064, 2065-2066, 2067-2068, 2069-2070, 2071-2072, 2073-2074, 2075-2076, 2077-2078, 2079-2080, 2081-2082, 2083-2084, 2085-2086, 2087-2088, 2089-2090, 2091-2092, 2093-2094, 2095-2096, 2097-2098, 2099-2100, 2101-2102, 2103-2104, 2105-2106, 2107-2108, 2109-2110, 2111-2112, 2113-2114, 2115-2116, 2117-2118, 2119-2120, 2121-2122, 2123-2124, 2125-2126, 2127-2128, 2129-2130, 2131-2132, 2133-2134, 2135-2136, 2137-2138, 2139-2140, 2141-2142, 2143-2144, 2145-2146, 2147-2148, 2149-2150, 2151-2152, 2153-2154, 2155-2156, 2157-2158, 2159-2160, 2161-2162, 2163-2164, 2165-2166, 2167-2168, 2169-2170, 2171-2172, 2173-2174, 2175-2176, 2177-2178, 2179-2180, 2181-2182, 2183-2184, 2185-2186, 2187-2188, 2189-2190, 2191-2192, 2193-2194, 2195-2196, 2197-2198, 2199-2200, 2201-2202, 2203-2204, 2205-2206, 2207-2208, 2209-2210, 2211-2212, 2213-2214, 2215-2216, 2217-2218, 2219-2220, 2221-2222, 2223-2224, 2225-2226, 2227-2228, 2229-2230, 2231-2232, 2233-2234, 2235-2236, 2237-2238, 2239-2240, 2241-2242, 2243-2244, 2245-2246, 2247-2248, 2249-2250, 2251-2252, 2253-2254, 2255-2256, 2257-2258, 2259-2260, 2261-2262, 2263-2264, 2265-2266, 2267-2268, 2269-2270, 2271-2272, 2273-2274, 2275-2276, 2277-2278, 2279-2280, 2281-2282, 2283-2284, 2285-2286, 2287-2288, 2289-2290, 2291-2292, 2293-2294, 2295-2296, 2297-2298, 2299-2300, 2301-2302, 2303-2304, 2305-2306, 2307-2308, 2309-2310, 2311-2312, 2313-2314





**MARCH 16-18, 2025**  
JAVITS CENTER, NYC



## **DISCOVER THE INDUSTRY'S FINEST JEWELRY TRADE EVENT**

Showcasing the classic designs that form the foundation of our industry along with the creativity that is shaping the future of fine jewelry.

**REGISTER NOW AT [JA-NEWYORK.COM](http://JA-NEWYORK.COM)**







# JCK | The jewelry trade's most important *global gathering*

ATTENDING JCK IS STEPPING INTO THE WORLD OF JEWELRY BUSINESS, COMMUNITY AND OPPORTUNITY. AS THE MOST IMPORTANT JEWELRY EXHIBITION, IT'S YOUR HOME FOR SECURE BUYING, LEARNING, NETWORKING AND DISCOVERING. YOU WILL FIND A DIVERSE RANGE OF PRODUCTS AND THE BRANDS BEHIND THEM THAT COVER EVERY FACET OF THE INDUSTRY. THIS IS WHERE ACCESS TO THE FUTURE OF JEWELRY LIVES.

WANT TO TAKE IT TO THE NEXT LEVEL? LEARN MORE ABOUT HOW AN UPGRADED **JCKPRO** BADGE UNLOCKS A JCK EXPERIENCE LIKE NO OTHER.



Friday, June 6 – Monday, June 9, 2025 | The Venetian Expo, Las Vegas, NV

OPENING 1 DAY EARLIER ON THURSDAY, JUNE 5:  
AGTA GEMFAIR™ LAS VEGAS IN THE GEMS PAVILION, THE HONG KONG PAVILION AND JCK TALKS

[JCK2025.COM/GLOBALSOURCESPUB](https://JCK2025.COM/GLOBALSOURCESPUB)







**JEWELLERY  
& GEM**  
WORLD HONG KONG

環球盛事 |  
九月香港珠寶首飾展覽會



# CONNECTING THE JEWELLERY WORLD

連繫環球珠寶業界

**15 - 19 / 9 / 2025**

AsiaWorld-Expo · Hong Kong  
香港 · 亞洲國際博覽館

**17 - 21 / 9 / 2025**

Hong Kong Convention and Exhibition Centre  
香港會議展覽中心

**The World's Number One Fine Jewellery Event**  
**全球最大型珠寶展**



To Exhibit 參展: **T** +852 3709 4991 | **E** salesjgf@informa.com To Visit 參觀: **T** +852 3709 4992 | **E** visitjgf-hk@informa.com



# 29th INTERNATIONAL JEWELLERY KOBE

Dates ▶ **May 15** [Thur] - **17** [Sat], 2025 10:00–18:00  
(until 17:00 on the last day)

Venue ▶ **Kobe International Exhibition Hall, Japan**

Organisers ▶ **RX Japan Ltd.**

**Visitor Registration (Free) !** ▶▶▶

For further details, please refer to ▶▶▶  



Western Japan's Largest\*!  
**880,000 products from 460 exhibitors.**



Scenes of IJK 2024 show

The numbers of products/exhibitors are forecasts released on February 20, 2025. These numbers may differ from the actual numbers at the show.  
The number of exhibitors includes co-exhibiting partners, group companies and association members.  
\*\*"Largest" in reference to the exhibitor number and the net exhibit space of trade shows with the same concept (as of 2025).



## The latest exhibitors/products Info.

- ◆ Exhibit products with photos
- ◆ Search by Category (Products, Materials, Price range, etc.)

Exhibitors/Products  
Directory







# SiJE

Singapore International Jewelry Expo 2025  
International Jewelry, Gems & Luxury Timepieces Exhibition

Brought to you by  IEG ASIA

*20<sup>th</sup> Anniversary Edition*

17 - 20 July 2025

Sands Expo & Convention Centre  
Halls A, B & C - Level 1  
SINGAPORE

Host



新加坡金钻珠宝商会  
SINGAPORE JEWELLERS ASSOCIATION

In Partnership With



For stand enquiries, please contact  
Quinie Tan, Senior Project Manager  
[quinie@iegasia.com.sg](mailto:quinie@iegasia.com.sg) | (65) 9106 3100



IEG ASIA Pte. Ltd., Singapore  
A company of ITALIAN EXHIBITION GROUP S.p.A.  
1 Maritime Square #09-57, HarbourFront Centre, Singapore 099253  
[connect@iegasia.com.sg](mailto:connect@iegasia.com.sg) | (65) 6028 5800



# The Ultimate Sourcing Guide for Buyers & Suppliers

**www.GlobalJewelrySpecial.com**

Trade Show Schedule Market Intelligence Free Business Matching Service



With nearly 30 years of experience in publishing a series of professional trade magazines, we have satisfied the sourcing needs of worldwide buyers and suppliers.

*Global Jewelry Special* provides up-to-date jewelry industry news, product trends, information on major jewelry shows, and supplier information to guide global buyers in making better procurement decisions.

《中國珠寶專輯》("China Jewelry Special") provides useful insights for companies looking to enter the China market. It contains a wealth of information about jewelry trading in China, gathering international jewelry products, recommendations on jewelry brands, as well as market intelligence, new trading policies, and jewelry industry forecasting.



**Global Sources Publications (Holdings) Ltd.**

Tel: (852) 2331 8507 Fax: (852) 2331 8316 Email: info@GlobalJewelrySpecial.com